

# MITSUBISHI

# QUICK LOCATOR GUIDE

<b>Car Signal Components</b> .....	710
Lamp .....	710
Pushbutton Assemblies .....	710
Sensor .....	710
<b>Contactors</b> .....	713
<b>Door Parts</b> .....	710-711
Contacts .....	711
Door Gibs .....	710
Door Locks .....	711
Encoder .....	710
Key .....	711
Sheaves .....	710
Silicon Controller .....	710
<b>Fan Assembly</b> .....	712
<b>Leveling Switches</b> .....	713
<b>Limit Switches</b> .....	713
<b>Printed Circuit Boards</b> .....	712
<b>Rollers and Guides</b> .....	711-712
Door Lock Rollers .....	711
Door Vane Roller .....	711
Guide Shoes .....	712
Hanger Rollers .....	711
Oilers .....	712

MITSUBISHI

## Car Signal Components



MIBT-1



MIBT-1-ARROW



MIBT-2



MIBT-3



MIBT-4



MIBT-5



MIBT-5-ARROW



MIBT-5-5



MIBT-6-BLANK



MIBT-7



MISS-10



MISLI-1

S.E.E.S. #	Description
MIBT-1	Pushbutton, for SPVF, MTB
MIBT-1-ARROW	Pushbutton, for SPVF, MTB Marked "Arrow"
MIBT-2	Pushbutton, for D51.31A Series
MIBT-3	Pushbutton, for GPS Series LHB007 008
MIBT-4	Pushbutton, for GPS Series LHB005 006
MIBT-5	Pushbutton, D160 12-24V Blank Marking
MIBT-5-ARROW	Pushbutton, D160 12-24V Marked "Arrow"
MIBT-5-1	Pushbutton, D160 12-24V Marked "1"
MIBT-5-2	Pushbutton, D160 12-24V Marked "2"
MIBT-5-3	Pushbutton, D160 12-24V Marked "3"
MIBT-5-4	Pushbutton, D160 12-24V Marked "4"
MIBT-5-5	Pushbutton, D160 12-24V Marked "5"
MIBT-6-BLANK	LED Pushbutton, Mitsubishi, Red Light
MIBT-7	Pushbutton, with blue light
MISS-2	Sensor, YG-25 Magnetic
MISS-3	Sensor, YG-1A Magnetic
MISS-10	Magnetic Proximity Switch, PSMO-25G1
MISLI-1	Light, 24V

## Door Parts



MICOD-5



MIDS-1



MIEP-2



MIEP-3



MIEP-4



MIWH-2



MIWH-3



MIWH-9

S.E.E.S. #	O.E.M. #	Description
MICOD-5	X65AC-31	Encoder, Rotary PKT1045-512-J30F
MIWM-1	YVP90-6	Door Motor, Mitsubishi YVP90-6
MIWM-2	YVP90-6S	Door Motor, Mitsubishi YVP90-6S
MIDS-1	YA098C118G01	Door Gib, 62mm x 40mm x 11mm
MIEP-2		Silicon Controller
MIEP-3	F726201, RM50TC-2H	Silicon Controller
MIEP-4		Silicon Controller
MIF-1	ZFB9B110	Fan, Mitsubishi 110V # ZFB9B110
MIWH-2		Sheave, 90mm O.D., bearing 6200Z
MIWH-3		Sheave, 60mm O.D., Nylon
MIWH-9		Sheave, 90mm O.D. x 11mm, bearing 6200RS

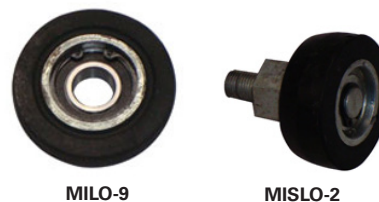
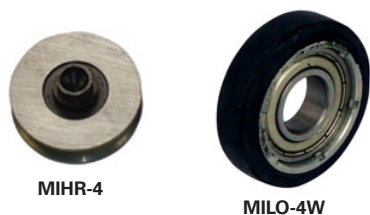
## Door Parts

S.E.E.S. #	O.E.M. #	Description
MIK-1	MIT900	Key, MIT900
MIK-2	MIT932	Key, MIT932
MILO-1	D161001C101	Door Lock
MILO-1R		Door Lock
MILO-2		Power Lock, HOP
MILO-3		Power Lock, COP
MILO-4		Contact, For 161 Door Lock
MILO-4WB		Wheel, For 161 Door Lock
MILO-5		Lock, Triangular
MILO-5K	B286858	Key, Triangular
MILO-7	JC1363	Lock, for Side Door
MISLO-1		Lock, Large Triangle for Freight Elevator
MIPP-1		Junction
MIPS-1	X59LX-30	Paneling Sheave
MISRP-1		Rubber Cushion, 64mm x 55mm, ID:32mm
MITR-1		Oil Seal for traction machine
MITBLT-001		Belt, for Mitsubishi



## Rollers and Guides

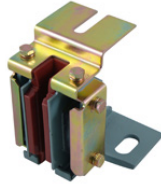
S.E.E.S. #	O.E.M. #	Description
MIDV-1		Roller, for Door Vane 46mm x 13mm, ID:12mm
MIHR-1	YA052C703G01	Roller, for Hanger, 56mm O.D., bearing 6201
MIHR-2	YA006C621G01	Roller, for Hanger, 72mm O.D., bearing 6202
MIHR-3		Nut, for Hanger Roller
MIHR-4	YA052C703G01	Roller, for Hanger with Collar 56mm x 14mm, bearing 6201
MILO-4W		Roller, for 161 Door Lock
MILO-4WB		Roller, for 161 Door Lock
MILO-4B		Bearing, for 161 Door Lock
MIHR-5		Roller, Retaining for Car Door Hanger Assembly 40mm x 12mm, 6g-M8
MILO-9		Roller, for Feight Elevator Door Lock 60mm x 16mm, ID:15mm, bearing 6202
MISLO-2		Roller, for FUJI Door Lock 50mm x 20mm, ID:12mm
MIDH-1		Hanger Assembly, for Landing Door
MIDH-2		Hanger Assembly, for Car Door



## Rollers and Guides



MIGS-1



MIGS-3



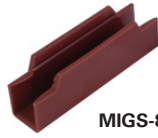
MIGS-5



MIGS-6



MIGS-7



MIGS-8



MIGS-9



MIGS-10



MIGS-11



MIOC-1



MIOC-2



MIOC-3

S.E.E.S. #	O.E.M. #	Description
MIGS-1		Guide Shoe
MIGS-1A		Mitsubishi Head Guide, For CW 16mm
MIGS-3	YA141B237G03	Guide Shoe, for High Speed 2.5m/s
MIGS-5		Guide Shoe, Sliding, 16mm
MIGS-6		Guide Shoe
MIGS-7		Guide Shoe Insert 120mm x 28mm x 9mm
MIGS-8		Guide Shoe Insert 120mm x 28mm x 16mm
MIGS-9		Roller, for Guide Shoe 80mm x 26.5mm, ID:17mm, bearing 6203
MIGS-10		Guide Shoe Insert, Set of 3 (1) 230mm x 35mm x 9mm, (2) 230mm x 30mm x 9mm
MIGS-11		Guide Shoe Insert, Set of 3 (1) 230mm x 34mm x 9mm (2) 230mm x 30mm x 9mm
MIOC-1		Oil Can, Large, GO2
MIOC-2		Oil Can, Square
MIOC-3		Oil Collector

## Fans



MIF-3

S.E.E.S. #	O.E.M. #	Description
MIF-3	ZQF-330	Fan, Mitsubishi ZQF-330

## Printed Circuit Boards



MIHOP-28



MIHOP-30

S.E.E.S. #	O.E.M. #	Description
MIHOP-28	KALEX3K688	PCB, Display, SCLC-V1.1 HOP
MIHOP-30	YE601B704B-01	PCB, TOS-PCB-014
MIDOB-7	DOR-120	PCB, Door Operator, Mitsubishi DOR-120

## Limit / Leveling Switches

S.E.E.S. #	O.E.M. #	Description
<b>MISS-1</b>		<b>Switch, YG-29 Magnetic Proximity</b>
<b>MISSW-1</b>	TR231-11YU1930	<b>Switch, LX2-411 Limit Auto Return</b>
<b>MISSW-2</b>	ZR231-11Yr1881	<b>Switch, LX2-412 Limit Non Auto Return</b>
<b>MISSW-3</b>	TK231-11YU	<b>Switch, LX2-413 Limit Auto Return</b>
<b>MISSW-4</b>	ZS231-11Yr	<b>Switch, LX2-414 Limit Non Auto Return</b>
<b>MISSW-5</b>	TV231-11r	<b>Switch, LX2-415 Limit With Small Roller Auto Return</b>
<b>MISSW-6</b>	TV231-11r	<b>Switch, LX2-415 Limit with Big Roller, Auto Return</b>
<b>MISSW-7</b>		<b>Switch, LX2-416 Limit</b>
<b>MISSW-9</b>		<b>Switch, UKS Limit Non Auto Return</b>
<b>MISSW-10</b>		<b>Switch, Slider</b>
<b>MISW-1</b>		<b>Switch, for Car Door DS-131</b>
<b>MISW-2</b>		<b>Switch, for Car Door</b>
<b>MISW-3</b>	LXP1-020-1A	<b>Switch, Limit</b>
<b>MISW-4</b>		<b>Switch, for Landing Door for GPS III</b>
<b>MISW-5-M</b>		<b>Magnet, Actuating Device for Leveling Switch</b>
<b>MILS-1</b>	EL-1370	<b>Switch, Limit</b>



MISS-1



MISSW-1



MISSW-2



MISSW-3



MISSW-4



MISSW-5



MISSW-6



MISSW-7



MISSW-9



MISW-1



MISW-2



MISW-3



MISW-4



MICT-1



MICT-2



MICT-3



MILS-1

## Contactors

S.E.E.S. #	O.E.M. #	Description
<b>MICT-1</b>	BH752Y922H03	<b>Contactor, for SD-N50 GPS</b>
<b>MICT-2</b>		<b>Contactor, SD-N35</b>
<b>MICT-3</b>		<b>Contactor, S-K20 Magnetic</b>
<b>MILO-4</b>		<b>Contact, for 161 Door Lock</b>
<b>MILO-6</b>	H131001C138G01	<b>Contact, for Door Lock</b>



MILO-4



MILO-6

# LOSING MONEY ON CALL BACKS?

Introducing...

## SMARTORK

Elevator Hoistway  
Door Closer



### What does it do?

As the door closes, the innovative SMARTORK overcomes wind resistance by design. The SMARTORK, with its helical groove design, actually regains tension as it closes the door. SMARTORK provides more tension in the "door-close" cycle than it does in the "door-open" cycle. It's easy to install; just remove the "Old Style" unit and install the SMARTORK as a replacement. Call today and ask for SEES part number:

**MIS-124-ST**

Don't forget your brackets:

**MIS-124-ST-BK**

Contact Us!

800.526.0026

## SMARTORK™



800.526.0026

info@seesinc.com

www.facebook.com/SEESinc

Visit Our Website:  
www.seesinc.com

- ▶ The "Uni-hub" allows for easy installation
- ▶ SMARTORK saves money on non-chargeable and non-billable hours for elevator companies dealing with "Wind Resistance Issues"
- ▶ Reliable solution to nuisance call-backs
- ▶ Maintenance calls to add or remove "wraps" will virtually be a thing of the past once the SMARTORK is installed
- ▶ Rated "Green" under Energy Efficiency guidelines
- ▶ 3rd party tests over one-million cycles with virtually constant torque verify extended service-life tests
- ▶ 2 year warranty
- ▶ Made in the USA
- ▶ Acts as a safety device by securing door lock mechanisms